

FROM WALLET TO YIELD

A BEGINNER'S VISUAL GUIDE

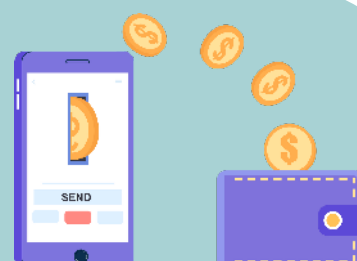
1. GET A WALLET

Install MetaMask or Trust Wallet to interact with DeFi platforms.



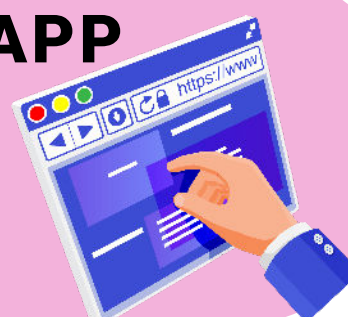
FUND YOUR WALLET

Buy crypto on an exchange (like ETH or USDC) and send it to your wallet.



CONNECT TO A DEFI APP

Visit a platform like Uniswap or Aave and connect your wallet.



USE THE PROTOCOL

Swap tokens, earn interest, stake crypto — all in a few clicks.



MONITOR AND WITHDRAW ANYTIME

Track your portfolio using Zapper or Zerion. Withdraw whenever you like.



HOW DEFI WORKS IN 5 SIMPLE STEPS



<https://coinfulcrum.com/>